

AUTOMATIC PNEUMATIC SAMPLERS

MODEL SV

- SUITABLE FOR POWDERS AND GRANULES
- SAMPLE CATCHMENT FROM GRAVITY FED INCLINED CHUTES, SCREW CONVEYORS AND CHAIN AND FLIGHT CONVEYORS
- NO PRODUCT DEGRADATION
- SIMPLE CONSTRUCTION
- LOW COST

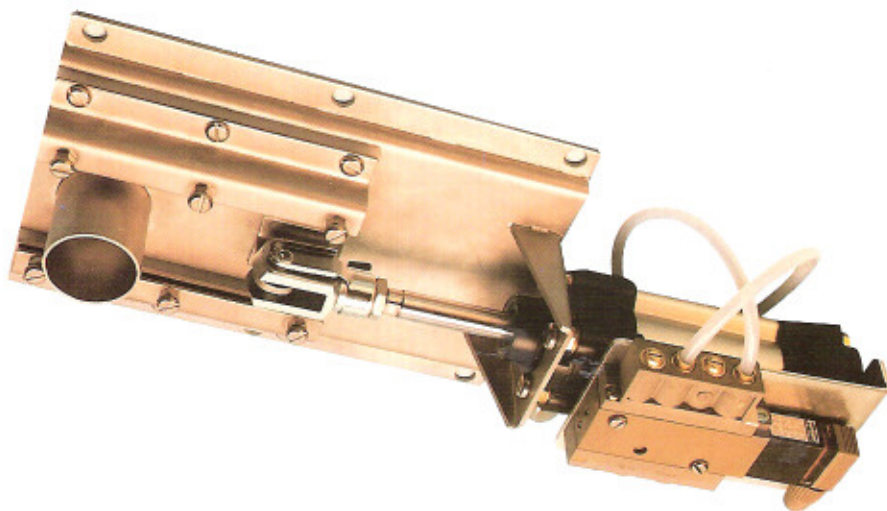
This pneumatically operated sampling device has been specifically designed to provide automatic sampling of powders or granules, from gravity fed inclined chutes, screw conveyors and chain and flight conveyors.

The sampler is fabricated from 304 stainless steel with polyethylene wear strips and operated by a pneumatic cylinder. The cylinder is controlled by a 5/2 solenoid valve.

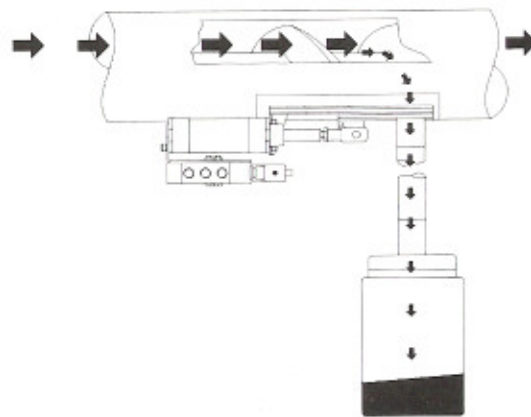
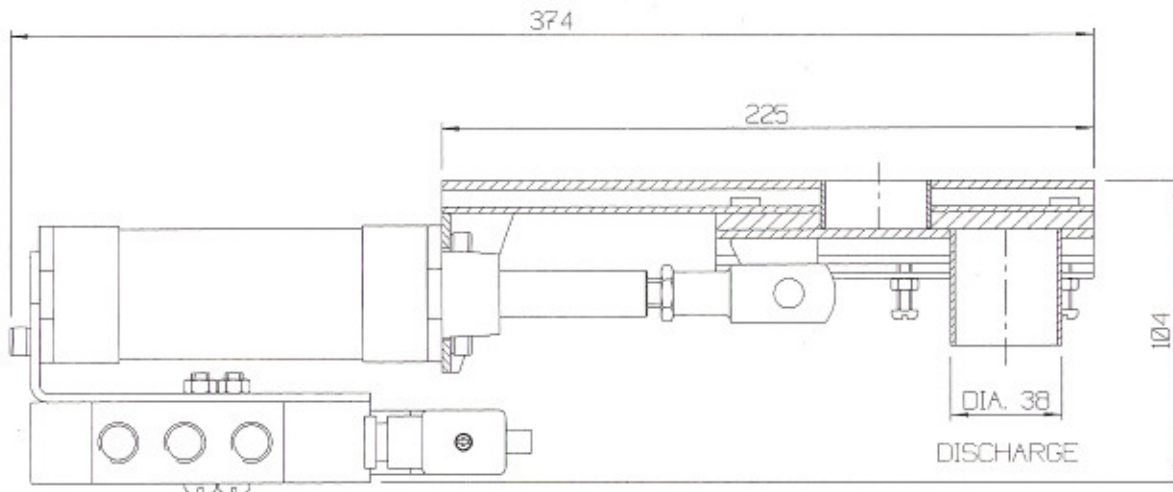
Sample collection is achieved by the operation of the pneumatic cylinder, which opens the aperture, allowing the sampled product to fall under gravity, through the discharge aperture, to the sample container.

After the desired sample is taken the aperture is closed, leaving the collection point fully isolated from the sample area.

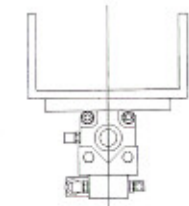
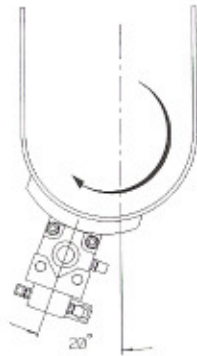
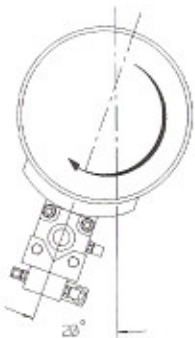
The sampler body can be manufactured to suit a flat or radiused profile.



Britton
POWDER CONTROL



MOUNTING POSITIONS



Flat Conveyor



Angular Chute

OPTIONS:

- Fully adjustable electrical sequence control unit
- Fully adjustable pneumatically operated control unit
- Electrical indication of sampler position
- Smooth bore flexible hose and sample container with wall mounting bracket

We are continually developing our products and accordingly we reserve the right to change specifications and dimensions without prior notice.



BRITTON VALVES LTD · KYNOCHS · BIDEFORD
DEVON · ENGLAND · EX39 4DT

TEL 01237 477465 · FAX 01237 421459