

GRAVITY DIVERTER VALVE

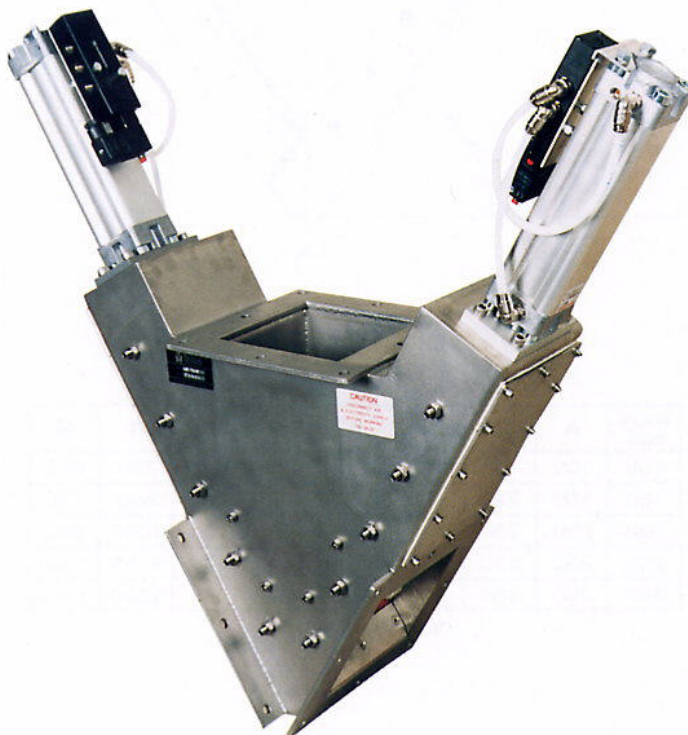
PNEUMATIC TYPE GD

- MILD STEEL OR STAINLESS STEEL CONSTRUCTION
- SIZES 100-300mm
- DOUBLE SLIDE PLATE DESIGN
- PNEUMATIC OPERATION
- FULLY ENCLOSED, DUST-TIGHT
- DIVERTS AND STOPS PRODUCT

This valve is available in mild steel or stainless steel, making it an ideal choice for the control of gravity fed powders and granular bulk solids in the food, chemical, plastics, etc., industries.

The smooth internal faces ensure no lodgement areas and the individual control of the two slide plates diverts to the left or right or both closed (or open). Unlike flap type diverters, this valve can be operated whilst the product is flowing and can also act as a shut off valve. Maximum operating temperature 80°C (150°C to special order).

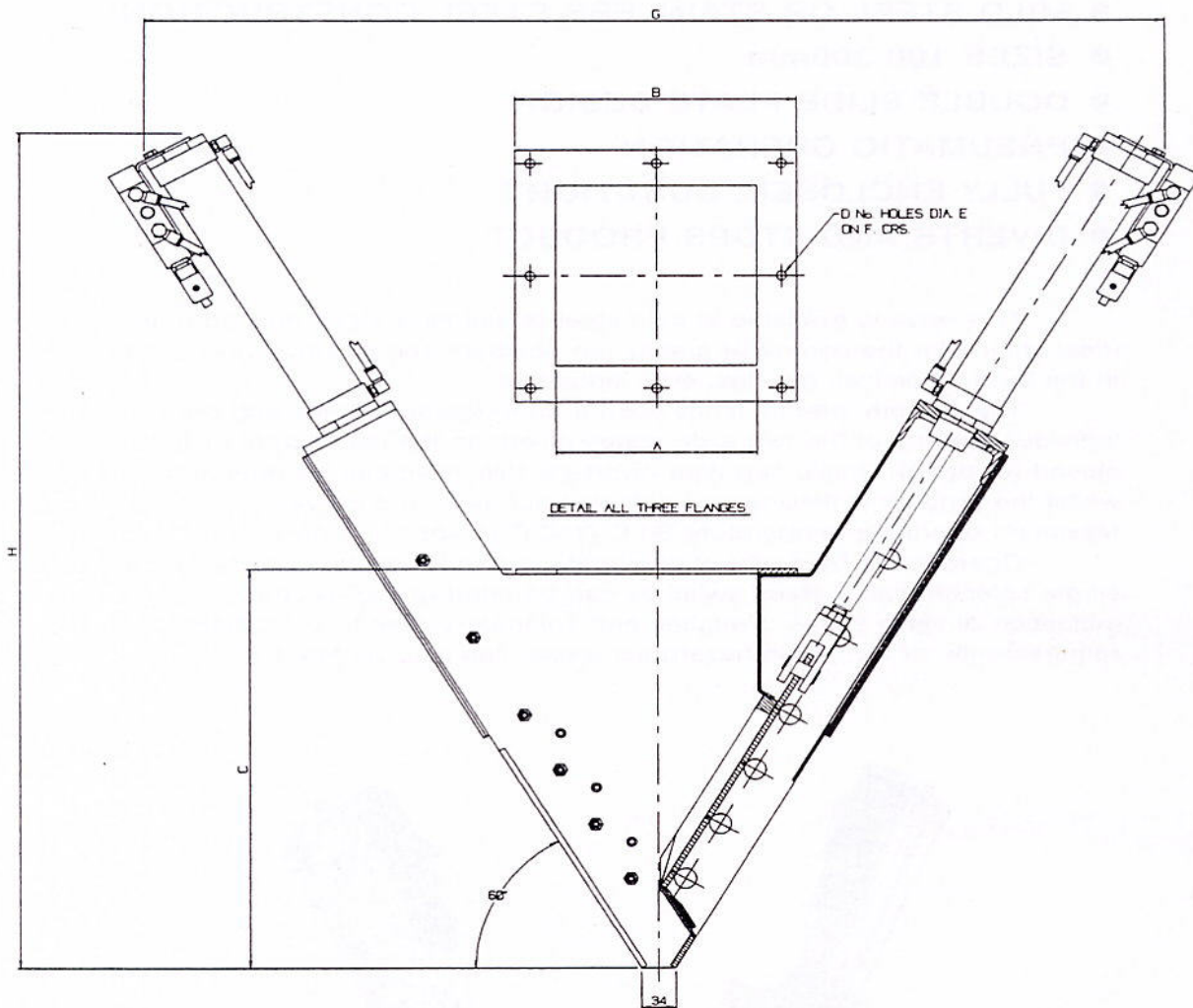
Operation is by a pair of pneumatic cylinders each controlled by a single solenoid valve. Reed switches can be fitted giving electrical indication of valve status. Switches and solenoid valves to customers' requirements, or for use in hazardous areas, can also be fitted.



Britton Procol
VALVES

*See over for
planning-in
dimensions*





| VALVE SIZE | A | B | C | D | E | F | G | H |
|------------|-----|-----|-----|----|----|-----|------|------|
| 100 | 100 | 180 | 360 | 8 | 10 | 75 | 700 | 640 |
| 150 | 150 | 230 | 400 | 8 | 10 | 100 | 850 | 770 |
| 200 | 200 | 280 | 445 | 8 | 10 | 125 | 1000 | 900 |
| 250 | 250 | 330 | 490 | 8 | 10 | 150 | 1150 | 1030 |
| 300 | 300 | 380 | 535 | 12 | 12 | 88 | 1320 | 1180 |

Dimensions in mm.

We are continually developing our products and accordingly we reserve the right to change specifications and dimensions without prior notice.



BRITTON PROCOL VALVES · KYNOCHS
 BIDEFORD · DEVON · ENGLAND · EX39 4DT
 TEL 01237 477465 · FAX 01237 421459
 EMAIL post@britton.dowsongroup.com
www.dowsongroup.com